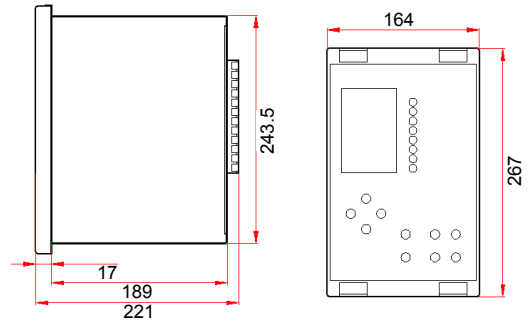


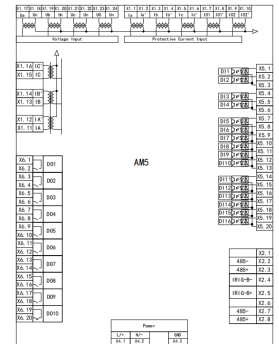
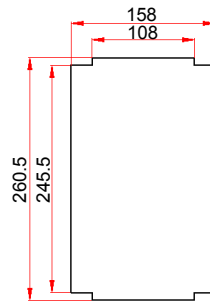
Protocols	AM5-							
	F	T	M	C	B	U1	U2	DB
Modbus serial				■				
IEC 60870-5-103				■				
IEC 60870-5-101				■				
Logs and Records	F	T	M	C	B	U1	U2	DB
Tripping context records				■				
Sequence of event records				■				
Measurement	F	T	M	C	B	U1	U2	DB
Electric parameter		U, I, P, Q, PF, F, Ep, Eq, Es						
Input current	8	8	8	8	8	0	0	8
Input voltage	4	4	4	4	4	4	8	4
Monitoring Functions	F	T	M	C	B	U1	U2	DB
Anti-pumping circuit				Optional				
Remote control				■				
Others	F	T	M	C	B	U1	U2	DB
GPS				■				

Note: ■ standard □ optional

Wiring



■ Dimensions



Operation Process

■ Cut-out Dimensions

■ Wiring

